



The Academic College of Tel-Aviv-Yaffo
121113 Computer Structure and the 8086 Assembly Language
Spring 2002

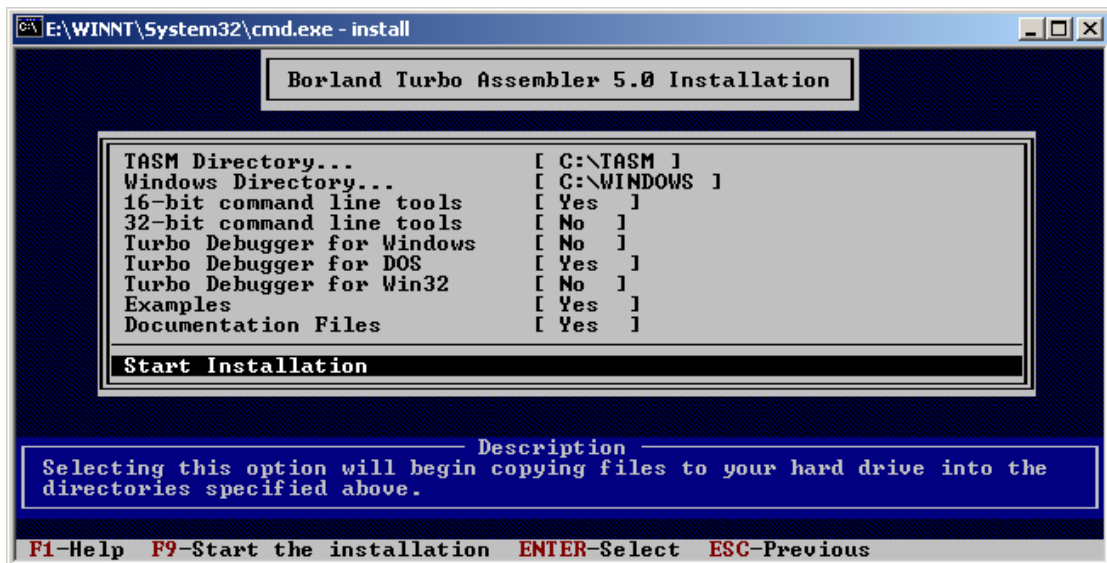
TASM installation and execution instructions

Installation

1. Get the 3 installation diskettes from the Computer Lab.
2. Enter the DOS command prompt, and write:

```
>A:  
>INSTALL
```

3. In the installation screen, choose the following options:



4. After you select the appropriate options, go to “Start Installation” and press ENTER. During the installation process, you will be asked to insert the installation diskettes.

Executing TASM and TLINK

To make an EXE file, you need to compile your ASM files and then use Turbo Linker.

1. Enter into the DOS prompt.
2. To start working, you have to get the BIN directory to your PATH. Do it using the command:

```
>PATH=%PATH%;C:\TASM\BIN
```

3. Now, your system is ready to work.
4. Example- running the HELLO.ASM sample:

Create a directory (for example C:\HELLO) and copy HELLO.ASM to that directory.

Get into the DOS command prompt, and run the following commands:

```
>PATH=%PATH%;C:\TASM\BIN
>C:
>CD \HELLO
>TASM HELLO.ASM
>TLINK HELLO.OBJ
>HELLO
```

5. To use Turbo Debugger, you should include the debug symbols in your compilation. To do that, enter into the DOS prompt and run the following commands:

```
>PATH=%PATH%;C:\TASM\BIN
>C:
>CD \HELLO
>TASM /ZI HELLO.ASM
>TLINK /V HELLO.OBJ
>TD HELLO
```

The /ZI and /V directives make sure the debug symbols are included in the executable.

Good Luck!

Eliav.